

Welcome to Klahanie School 2025-2026 Year Round School Year!

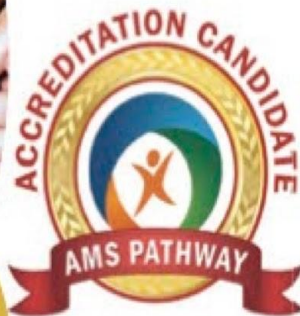
Guardians Welcome Information Evening

YEAR-ROUND MONTESSORI ANTIBIAS

non-profit independent school

Celebrating side-by-side learning.

Ages 2.5 yrs-Kindergarten



KLAHANIE
SCHOOL



Openings!

Community service youth
internships available.

KLAHANIESCHOOL.ORG

Intentions from Klahanie School staff:

Care and support of your your child transitioning into school daily, year round.

Literacy and Montessori specific, engaging, lasting pedagogy systems through individualized learning explorations in all areas of the curriculum (math, language, sensorial, practical life, geography, zoology, botany sciences and engineering introductions).

Fun! Playfulness, Care in Creations, Kindness and Inclusion of Ideas

Thoughtful and ongoing and updated science-researched based consistent strategies supporting student learnings and developmental growths.

Modeling our love of: earth, learning, living and learning abroad, cultural diversity explorations, patiences and care-kindness. Fun and always playing.

Ongoing learning.

Bravery and Resiliency.

Agenda for our time together:

We will focus on having clearer understanding of the 2024-25 school year and the flow for your child's developmental importance in our Early Childhood Education Montessori Antibias multi age class experience.

5-5:20pm Greetings/ introductions to group, introductions to lead/Ed Emmy Graham, nuts and bolts school logistics

5:20-5:40 pm multiage experience and areas of the curriculum

5:40-6pm social emotional, ABAR, specialist focuses and how that works in our Klahanie School Montessori class

6-6:20 pm Q&A / parent connecting

6:20-6:30pm Gratitude Round and Closing

Round of Introductions

***Your Name, Your Child (and age), how many years you have been at Klahanie School?**

***Please share one fun fact about yourself.**

***Do you need nanny-share or carpool?**

Thank you Marta Searles for the playdough support each month!

Specialists at Klahanie School add monthly, quarterly extended specialized introductions to areas of work and intentions in the greater world valuable to our student's early developmental wonderment explorations.



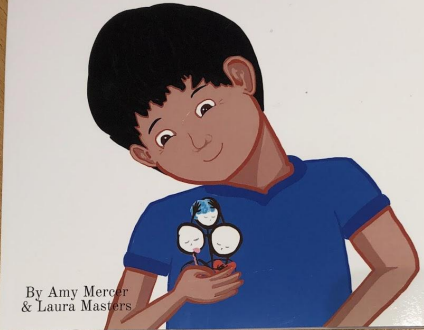
Please contact the school with Specialist ideas, referrals or please contact us if you seek to visit class with a specialized focus, we welcome you and all you do!

Specialists in Klahanie School

- Guardian Learning Evening
- Classroom Visits: monthly rotations of island Community members with varying expertise.
- Annual parent supported field trip, TBA

Hello Brains!

An mBIT science based guide to listening within



By Amy Mercer
& Laura Masters

Strong, Wise and Kind



An mBIT Lullabye

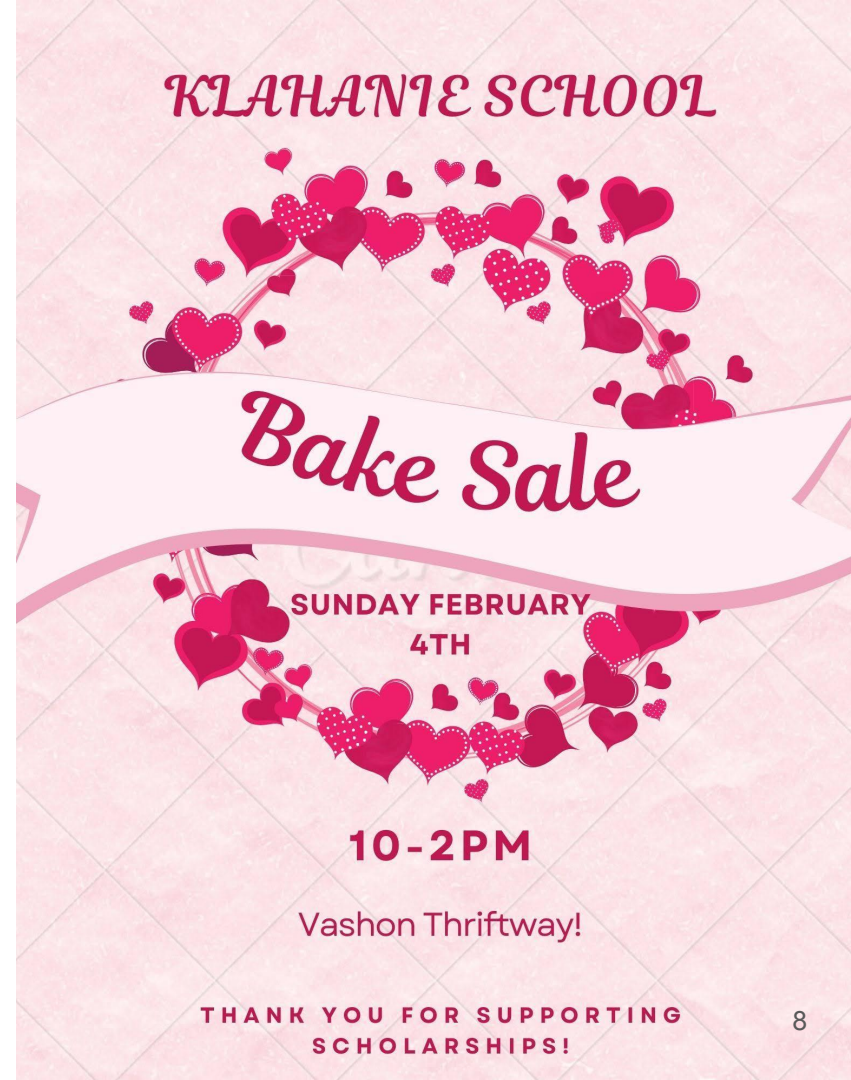
By Amy Mercer and Laura Masters

COMMUNITY: DAILY We STRIVE TO SHOW and Model what we Know!

Thank you for Volunteering!

- Baking and Table Time to
- create a sustainable financial
- aid - scholarships funding
- each new school year.

***Donate Thriftway Receipts!**



KINDERGARTEN AT KLAHANIE SCHOOL! Ways we support student successes moving forward into elementary learnings and experiences:

Preparedness at the end of Kindergarten (unless learning observations made regarding developments and possible referrals to extended supports).

Literacy in language and mathematics:

- Recognition/comprehension and recall of all names, sounds and shape of letters.

- Comprehension of phonetics usage in cvc (consonant, vowel, consonant phonetic words), blends and introductions-use of literacy rules (silent /e/, etc).

- Recognition/comprehension and recall of 0-1000 quantity, shape match and usage of the families 1-10/100/1000s. As well as introduction and use of addition (small and large), subtraction, multiplication, division and geometry and algebraic exposure.

Social Emotional: Preparedness to engage and concentrate and equity building respect with teams, groups in school and outside of school. Resiliencies to practice through challenges and forming individualized self care-advocate to ask counselors, teachers what they need.

Seeking More Understanding of Montessori Education: <https://amshq.org/>

*Although this method bears my name, it is not the result of the efforts of a great thinker who has developed his own ideas. **My method is founded on the child himself. Our study has its origins in the child.** The method has been achieved by following the child and his psychology.*

- Maria Montessori, The 1946 London Lectures, p. 129

[You and Your Child's Montessori Education: Early Childhood](#) is designed for families interested in incorporating the Montessori philosophy into their day-to-day lives and parenting approach. Participants will receive resources to enhance their child's education, deepen their Montessori knowledge, and learn how to apply Montessori principles at home. Hear from a parent who recently took the class: [Register now](#) and join fall class beginning **October 14**.

<https://amshq.org/Blog/2024-09-18-Planes-of-Development-and-Sensitive-Periods-Part-1>

Planes of Development: Observable Stages

"I have found that in his development, the child passes through certain phases, each of which has its own particular needs. The characteristics of each are so different that the passages from one phase to the other have been described by certain psychologists as 'rebirths'."

—Maria Montessori, *Citizen of the World*, p. 32

One of the most foundational features of Montessori education is the three-year multi-age programs. These configurations are not arbitrary, but are based on the planes of development, or four distinct periods of growth: 0 – 6 years; 6 – 12 years; 12 – 18 years; and 18 – 24 years. Maria Montessori (and other developmental theorists, like Jean Piaget and Erik Erikson) confirmed that children develop through a series of observable stages, each with specific needs and predispositions—cognitive, social, physical, moral, and emotional.

<https://amshq.org/Blog/2024-09-18-Planes-of-Development-and-Sensitive-Periods-Part-1>

Klahanie School Year Round Multi Age experience and areas of the curriculum, pedagogy, method

<https://amshq.org/Blog/2024-09-18-Planes-of-Development-and-Sensitive-Periods-Part-1>

The only thing the absorbent mind needs is the life of the individual; give him life and an environment and he will absorb all that is in it (Dr. Maria Montessori, 1946).

The environment to which she refers is the **prepared environment**—the curriculum, materials, and activities which reflect the sensitive periods of the first-plane child. These include:

- *order (what is alike and what is different)
- *language (letter recognition and vocabulary)
- *refinement of movement (coordination)
- *refinement of the senses (discrimination of sensory stimuli)
- *concentration and repetition (toward achieving a goal)
- *grace and courtesy (social skills)
- *independence (physical autonomy)

The environment of the Early Childhood classroom fulfills the young child's needs through a series of Sensorial, Language, Math, Cultural, and Science materials, as well as Practical Life activities.

Order (care of environment, math, language), Concentration, Coordination, Independence in a Montessori Plane of Development focused Classroom/School

Each of the sensorial materials requires concentration on the part of the child, which is essential to success in their future work in life.

The first-plane child also learns a great deal of new vocabulary through their use of the sensorial materials, which, along with **Practical Life** experiences, also provide indirect preparation for writing (holding a pencil) as the child handles the small pieces using a pincer grip.

Other materials, however, are more directly aimed at letter recognition, writing, and reading. These include (among others):

- *the Sandpaper Letters
- *the Sand Tray
- *the Metal Insets
- *the Movable Alphabet
- *chalkboards for writing
- *phonetic and phonogram objects, cards, booklets
- *realistic books
- *Geography & Botany maps
- *Kindergarten projects

Kindergarten projects encompass all areas of the class units of Language, Math, Sensorial, Practical Life, Geography, Zoology, Botany, Brain Gym Movement, and Social Emotional, Equity-Peace-Respect Grace and Courtesy- Advocacy Development.

What are the 5 Essential Components of Effective Reading Instruction?

1. Phonetic Awareness
2. Phonics
3. Fluency
4. Vocabulary
5. Comprehension

What does Fluency, Vocabulary and Comprehension Reading Phases mean for my Early Learner at Klahanie School?

Fluency Phase Importance: Guided Practice!

Through **guided, daily instruction practices, observations** of the **learning process** is modeled and supported to see HOW the learner's process is progressing, what adjustments need to be made and also if early interventions and conversations are needed with families for additional supports-accommodations and team support offered.

Fluency is visited through specific materials-lessons utilizing the practices of **playing combinations of the** Phonemic/Pre-Alphabetic and Phonics/Partial-Alphabetic Phases.

Partnership of Vocabulary & Comprehension Phase Importance: Keep Up Guided Practice!

Students need 95% of known vocabulary prior to understanding what they are reading. Teachers use of scientific, precise vocabulary exposure is essential for comprehension partnership outcomes and successes for readers. Comprehension branches with these components:

- **Strategies** (metacognitive) the *how to do* actions
- **Background knowledge** of hook ideas, vocab
- **Text structure is matched to their developmental level**, not too complex to grasp, hook, sink to comprehension. Inner successes.

Literacy Integration of the Phases in Reading Progressions is Essential for Student's Internal successes, and teacher supportive reviews and referrals.

Key Takeaways:

- Montessori classroom lessons and material education moments nurtures the foundations of reading with fluency daily practices the entire year focused acutely through daily lessons, observations and reports in a students progress of learning in:
 - **Phonemic Awareness:** Helps young children use more advanced ways of learning new vocabulary. Forming connections between visual information about the word and the word as it appears in print/letters. As well as forming the definitions, pronunciation and overall knowledge stored in the brain regarding that word.
 - **Phonics Awareness:** Offering time to think about with students how written language was created and various alphabets of the duration of time spoken language has been used on Earth. Sets of rules were created and Phonics instruction is introduction to understanding the set of rules that specify the relationship between letters in spelling and sounds spoken in language. Breaking it down time! (Effective Reading Instruction p.7-12).

We are daily moving into the Fluency, Vocabulary-Comprehension phases with each practice made side by side your early learner. Literacy Fun is in store for literacy learnings at Klahanie School!



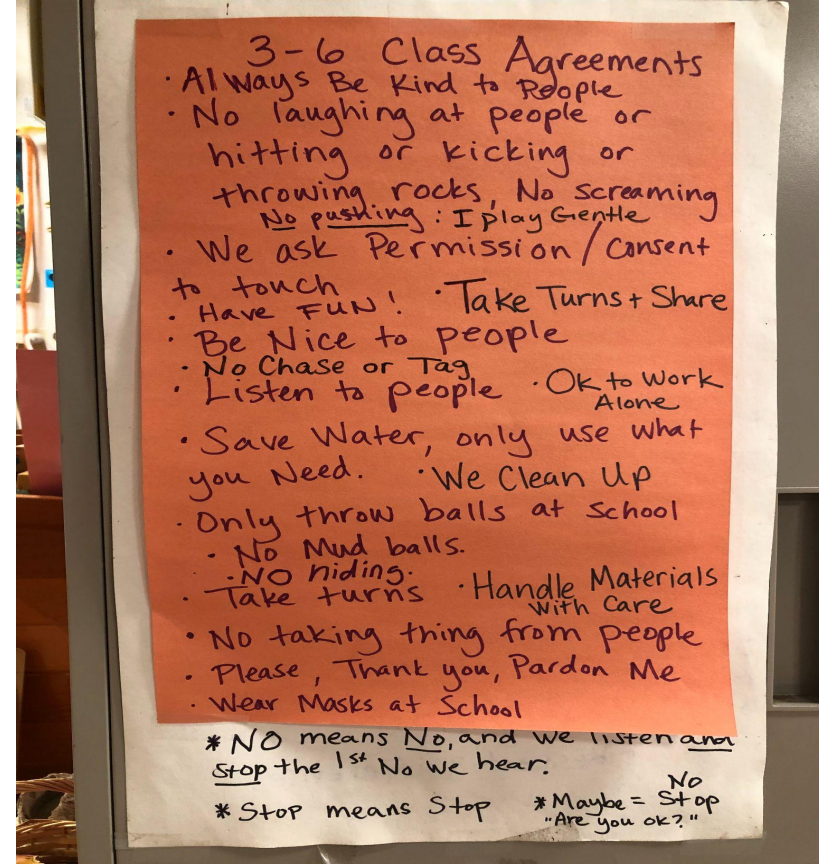
Using daily systematic and explicit (when moving to later phases), varying approaches and lessons of teaching these five essential components. Sandpaper Letter and object matching lessons, rhyming and games are continuously used as base foundation throughout each phase in fluency and vocabulary-comprehension reviews.



Using daily systematic and explicit (when moving to later phases), varying approaches and lessons of teaching these five essential components. Classroom labels throughout the room, object matching lessons, Nomenclature 3 Part Cards (science), rhyming, word/photo matching puzzles and games are continuously used as base foundation throughout each phase in fluency and vocabulary-comprehension reviews.

Year Round Social Emotional Focuses at Klahanie School

Klahanie School foundations are rooted in the Social Emotional, neurological data proven benefits of Early Education integration moment-to-moment practices of inclusion, equity and Respect. Klahanie School classes collaborate to co-create a trusting space to learn, using Safety in learning as our daily focuses.



https://amshq.org/-/media/Files/AMSHQ/Research/Action-Research/The-Effects-of-a-Peace-Curriculum-on-Reducing-and-Resolving-Conflicts-among-Children-Ages-3_6-Years.ashx

Montessori with Integrity – Part 2: DEI and ABAR Practices as Essential to Quality Program Implementation

<https://amshq.org/Blog/2022-11-14-Montessori-with-Integrity-Part-2-DEI-and-ABAR-Practices>

<https://amshq.org/Educators/Community/Peace/Peace-Resources>

Klahanie School follows elements as part of Montessori Education for Peace, Promoting awareness of and appreciation for a range of cultures and the people who comprise those cultures while Klahanie School embraces the “core Montessori principles” to include the important work of implementing DEI and ABAR principles, ongoing work and kept-up certifications, incorporated requirements for the inclusion of ABAR topics in the teacher education programs and classroom standards. We at Klahanie School are taking daily inventory of ABAR and DEI work with all students, staff, families/guardians and greater community communications, opportunities and connection nurturing.

- *respectful interactions
- *cooperation and collaboration
- *peaceful conflict resolution
- *Fundamental needs of humans
- *Timeline of civilizations
- *Study of a continent
- *Multicultural events and celebrations
- *Global citizenship projects

Klahanie School Year Run Down

Autumn is a time of wonderment, forming groups-relationships and connections with the environment. *Teachers use this time for ample observations, friendship coaching-practices support and match making ideas for families.*

Winter is a time for students to embrace their space, adjust to cold weather together and upcoming festivities, focuses on practices. Normalized classtime is formed through the independence practices. *Teachers use winter to begin assessments from observations, class moments to observe and allow the children to direct.*

Spring is time for the class to be in full engagement, friendship and maturation growths in confidences and forming deeper interest and practices of advocacy/social justice. *Teachers form year reports for each student.*

Summer is fun time and practice of integration inclusion practices with CES students joining. *Teachers re-support relationship social emotional coaching, nurturing of closings.*

Q&A TIME

Gratitude Round Closing

THANK YOU FOR ALL YOU DO KLAHANIE PARENTS!